

rotronic

Datenblatt - Fiche technique - Data sheet

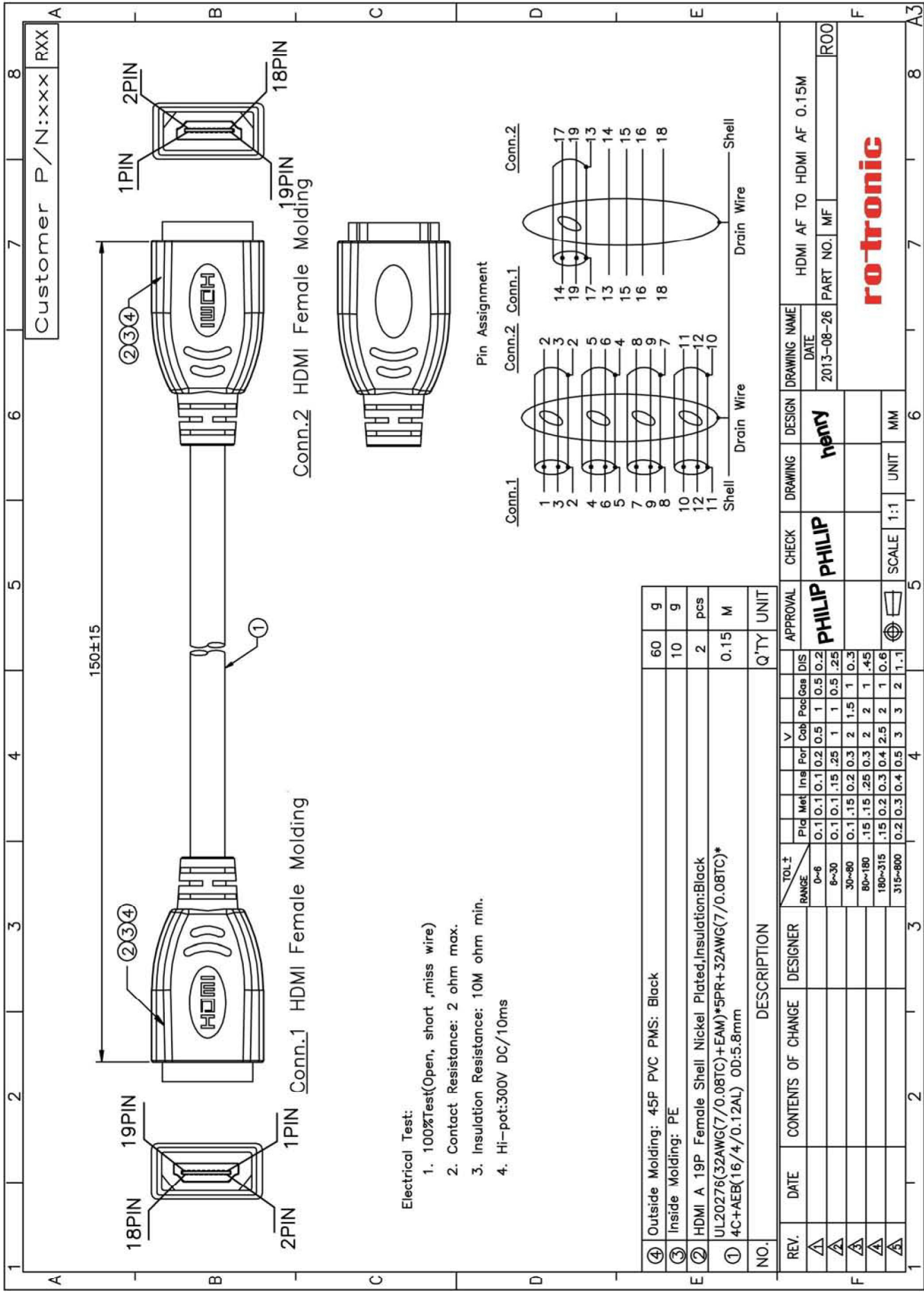
12.99.3123



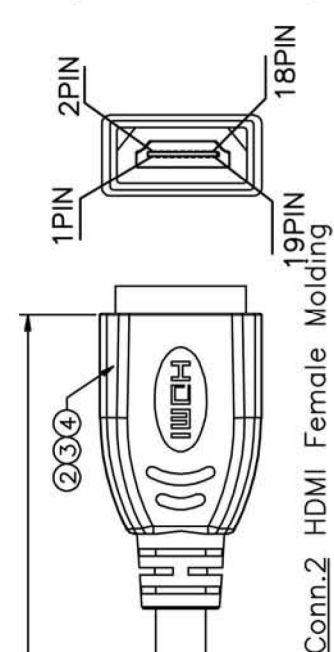
VALUE HDMI Kupplung Buchse – Buchse, 0,2 m

VALUE Adaptateur HDMI, HDMI F – HDMI F, 0,2 m

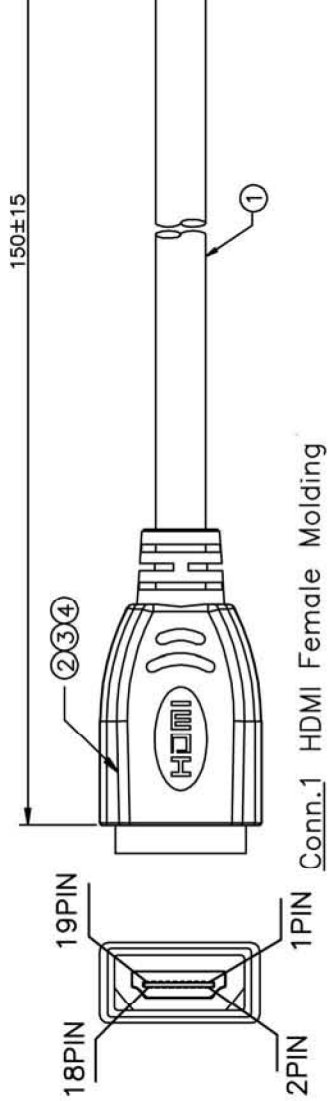
VALUE Cableadapter, HDMI F – HDMI F, 0.2 m



Customer P/N:xxx RXX

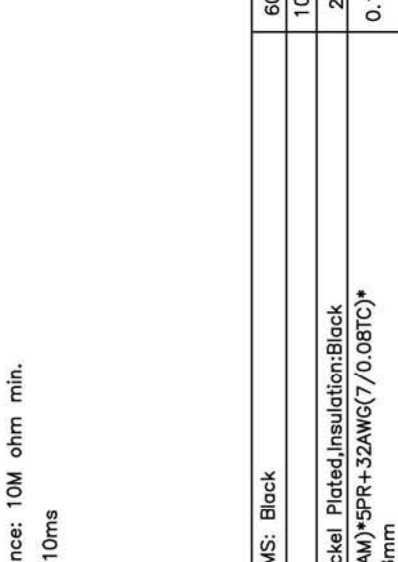


Conn.2 HDMI Female Molding



Conn.1 HDMI Female Molding

- Electrical Test:
1. 100%Test(Open, short ,miss wire)
 2. Contact Resistance: 2 ohm max.
 3. Insulation Resistance: 10M ohm min.
 4. Hi-pot:300V DC/10ms



NO.	DESCRIPTION	Q'TY	UNIT
④	Outside Molding: 45F PVC PMS: Black	60	g
③	Inside Molding: PE	10	g
②	HDMI A 19P Female Shell Nickel Plated,Insulation:Black	2	pcs
①	UL20276(32AWG(7/0.08TC)+EAM)*5PR+32AWG(7/0.08TC)*4C+AEB(16/4/0.12AL) OD:5.8mm	0.15	M

REV.	DATE	CONTENTS OF CHANGE	DESIGNER	TOL.±	Pld	Met	Insl	Por	V	DIS	APPROVAL	CHECK	DRAWING	DESIGN	DRAWING NAME
△				0-6	0.1	0.1	0.2	0.5	1	0.5	0.2	PHILIP	henry	HDMI AF TO HDMI AF 0.15M	
△				6~30	0.1	0.1	.15	.25	1	0.5	.25	PHILIP	henry	HDMI AF TO HDMI AF 0.15M	
△				30~80	0.1	.15	0.2	0.3	2	1.5	1	PHILIP	henry	HDMI AF TO HDMI AF 0.15M	
△				80~180	.15	.15	.25	0.3	2	2	1	PHILIP	henry	HDMI AF TO HDMI AF 0.15M	
△				180~315	.15	0.2	0.3	0.4	2.5	2	1	PHILIP	henry	HDMI AF TO HDMI AF 0.15M	
△				315~800	0.2	0.3	0.4	0.5	3	3	1	PHILIP	henry	HDMI AF TO HDMI AF 0.15M	

rotronic

2013-08-26

2013-08-26

PART NO. MF

ROO

SCALE 1:1

UNIT MM